



Vasse
Primary School

ESTD 1869

Business Plan 2016 - 2018

'Preparing for the future'



About Vasse Primary School

Welcome to Vasse Primary School (est. 1869). The present site of the Vasse Primary School has been occupied since 1884 when a stone building was erected as a classroom. Vasse Primary School, an Independent Public School, retains a distinctly rural character in a semi-suburban location. This is a school with clearly articulated values and it's particularly pleasing rural ambience which contributes significantly to a 'sense of place' for students.

Learning is more than an academic pursuit; it is a 'total picture', which provides a balance between a student's intellectual, physical, emotional and relational needs. Students have the opportunity to participate in a wide range of specialist areas in and out of school to complement the core learning curriculum. The school offers unique programs in Music, Art, Dance/Drama and Physical Education. The school actively promotes inclusive pastoral care and fosters the development of social and emotional well-being.

This Business Plan has been developed in conjunction with students, staff, parents and members of the wider community. It sets a clear strategic future for the next three years which will support our students to be successful lifelong learners. The school, along with the School Board, will actively monitor the school's performance through a variety of measures involving staff, students, parents and community. These measures include academic performance (e.g. National Assessment Program in Literacy and Numeracy - NAPLAN), non-academic performance (e.g. attendance), satisfaction rates (e.g. surveys), and governance (e.g. reviewing operational plans).

The strategies and milestones contained in this plan indicate the level of progress towards achieving our three priorities:

1. English
2. Maths
3. Learning Environments
- Culture of Engagement

"I think that vasse is a good school because it has lots of nature like trees and bushes. The teachers are very good with the students and the chromebooks are good for doing work on."

Nela



School Overview

We aim to foster creativity and critical thinking in order to meet the demands of increasing globalised markets and competitiveness, and the rapid pace of change through technologies, automation and connectivity.

Student engagement and student achievement are at the forefront of our plan for school improvement. Everything we do is evaluated in relation to its effect on student performance.

Our Vision

“At Vasse Primary School we aim to provide a safe, professional, creative and highly engaging environment so all students are provided with opportunities to develop the skills and knowledge to be resilient, well balanced individuals who are supportive of each other and work towards becoming successful life-long learners.”

Our Expectations

Be
your
Best

Be
Respectful

Be
Responsible

Our Motto

‘Preparing for the future’

This motto means

1. As a staff we are a team, and as a team, we constantly work together to prepare common goals for individuals and for the whole school.
2. As a team we each play a vital role in the academic and non-academic education of our students, equipping them with the skills, knowledge and attitudes required for the future.
3. As a whole school community we make decisions in a shared environment with the students’ best interests in mind, now and for the future.





Our Key Strategic Priorities and Milestones – **ENGLISH**

ENGLISH PRIORITY

Establish a whole school approach to the implementation of English in line with our School Vision and the Department of Education (DoE) Strategic Direction for Schools.

BROAD STRATEGIES AND MILESTONES

- Commitment of 450 minutes of English per week as per the DoE policy guidelines.
- Provide a positive, rich learning environment that engages students in a wealth of literature, language and literacy experiences.
- Strong focus on phonological sequence and an Oral Language programme.
- Emphasis on Gradual Release and Guiding Student Success through whole class, small group and individual instruction.
- Consistent use of text type and comprehension strategies.
- Scope and Sequence to develop the three strands of the English curriculum – Literature, Literacy, Language.
- Explicit teaching of: The Author's purpose (persuade, inform, entertain, explain or describe), super six comprehension strategies, editing and revising strategies (CUPS - Capital letters, Understanding, Punctuation, Spelling and ARMS - Add words, Remove words, Move words, Substitute words), text type conventions, guided reading.
- Successful integration of technology in English.



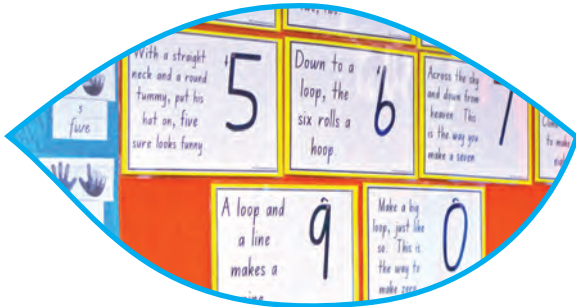


TARGETS

- All staff will be engaged in the Vasse English Scope and Sequence document.
- Evidence of an upward trend in Reading Comprehension results between March and October in the Australian Council of Educational Research (ACER) testing.
- Achievement will match or exceed the median score according to the ACER norm referenced report in Reading Comprehension.
- 90% of the stable cohort with regular attendance will achieve above the national minimum standard—NAPLAN.



"I like the way that vasse has all the new technology. I also like the canteen food. I also like how the people here are so friendly."
Lillia



Targets

- 90% of staff will be engaged in various elements of the Origo programme.
- 90% of the stable cohort with regular attendance will achieve above the national minimum standard—NAPLAN.
- At the end of the year 90% of the stable cohort with regular attendance will achieve the mean scaled score in ACER.
- At the end of the year the stable cohort with regular attendance will achieve 90% accuracy in times tables as allocated to each year level.





Our Key Strategic Priorities and Milestones – **LEARNING ENVIRONMENTS** ‘Culture of Engagement’

LEARNING ENVIRONMENT PRIORITY

Establish a whole school approach to the implementation of an engaging Learning Environment in line with our School Vision and DoE Strategic Direction for Schools.





Broad Strategies and Milestones

- All staff will engage with the Scope and Sequence documents on Critical and Creative Thinking, Cooperative Learning and Graphic Organisers.
- All staff will implement strategies which focus on increasing student engagement including altering the physical classroom environments.
- School will provide time to release all year level staff to plan collaboratively.
- Utilise staff meetings and sub-school meetings to share, mentor and reflect on best practise.
- All staff will be inducted on the whole school PBS program. PBS will be implemented across the whole school with all classrooms engaged in PBS.
- DOJO points will be used in class and Superslips to be used in the playground as incentives. Playground negative behaviour slips and reflection sheets will be used for negative behaviours.

Targets

- 50% Increase in staff changing their learning environments to improve student engagement.
- Create three “lighthouse” classrooms with flexible, adaptable furniture each year
- Develop Scope and Sequence documents in critical and creative thinking, cooperative learning and graphic organisers.
- Improve the percentage of students attendance to greater than 90%.



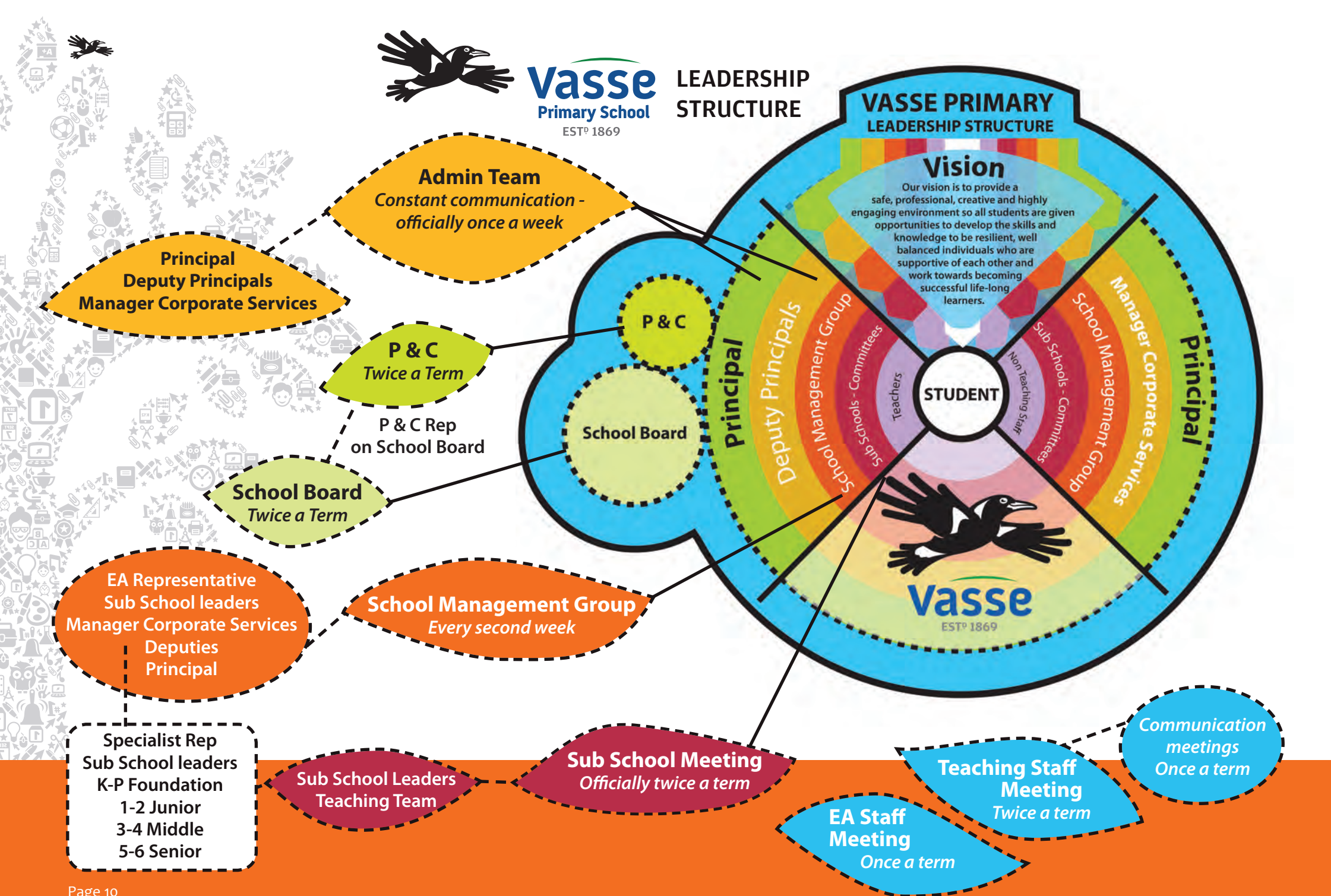
"the playground equipment is really fun to do games on at recess I play chasey with some friends. You get to see your friends, which is probably the best part."

Thett



Vasse
Primary School
ESTD 1869

LEADERSHIP STRUCTURE



STRONG, SUSTAINABLE COMMUNITY PARTNERSHIPS

Vasse Primary School has evolved from a school housing children predominately from nearby rural properties, to a bustling school in excess of 650 students in a semi-suburban setting. The staff ensures that strong community orientated values and morals are maintained in the school.

With the development and expansion of the Vasse Business Park we aim to develop close partnerships with local businesses and industry. The school has also applied for membership into the Busselton Chamber of Commerce. We will become the first primary school to be involved with this organisation.

We will collaborate with other organisations and service providers to enhance children's learning and wellbeing:

- P & C
- School Board
- Vasse Art Award Committee
- Arts Margaret River
- Stephanie Alexander Kitchen Garden
- Local sporting clubs
- Community Health
- Regional Therapy Team
- Cape Naturaliste College
- Busselton Senior High School
- Community Library
- TAFE
- University-Teacher Education





"The people at Vasse Primary School are super nice and have a great sense of humor!" Luc

An Independent Public School